

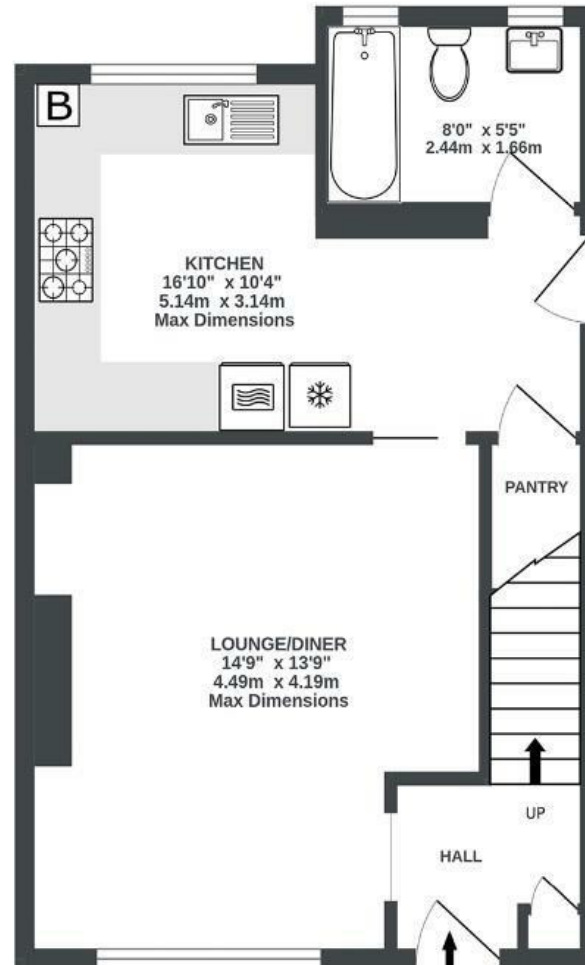
# Marksbury Road

## BEDMINSTER

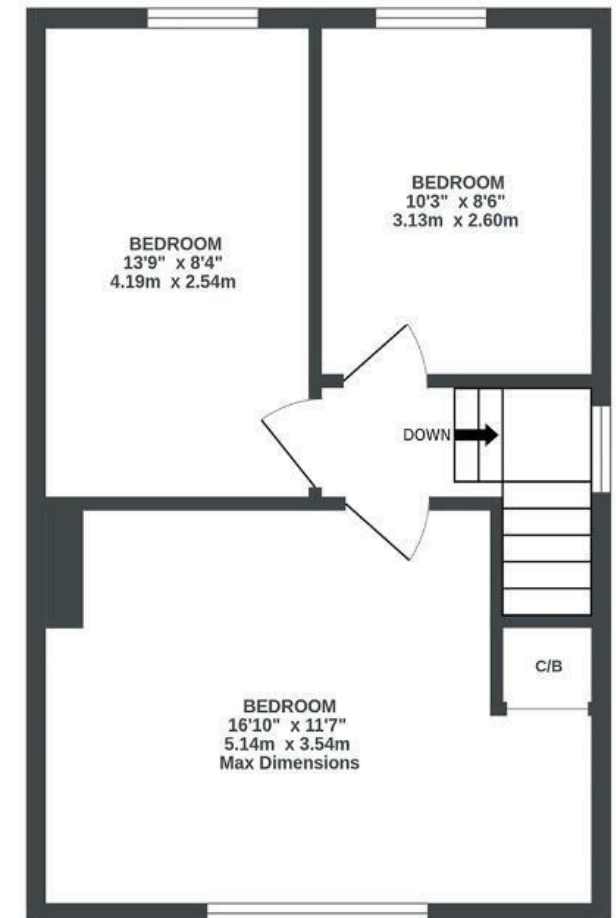
APPROXIMATE FLOOR AREA  
83 SQM / 893 SQFT



GROUND FLOOR  
457 sq.ft. (42.5 sq.m.) approx.



1ST FLOOR  
436 sq.ft. (40.5 sq.m.) approx.



Illustrations are for reference purposes only, measurements are approximate, not to scale.

**Boardwalk**

# Marksbury Road , BRISTOL



£400,000



BS3 5JY



3 Bedrooms



1 Bathrooms

*"We love sitting in our large, south-facing garden drinking our morning coffee before cycling 15 minutes into the city centre for work. Along with it's great location, a huge asset is the off-street parking and wide side access giving the feeling of immense space and making it a more accessible home. We were drawn to the generously sized bedrooms and feel that the house holds great potential for extending. In the winter the house is cozy and we have loved sitting on the couch watching movies"*

